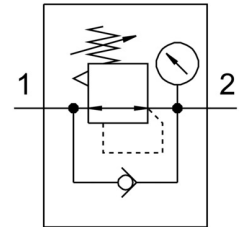


Pressure regulator LR-1-D-MAXI

Part number: 159627

FESTO



Data sheet

Feature	Value
Size	Maxi
Type code	LR
Series	D
Actuator lock	Rotary knob with detent
Mounting position	Any
Structural design	Pilot-controlled piston control valve
Controller function	Outlet pressure constant With secondary exhausting
Symbol	00991558
Pressure gauge	with pressure gauge
Operating pressure	0 bar ... 16 bar
Pressure regulation range	0.5 bar ... 12 bar
Max. pressure hysteresis	0.4 bar
Standard nominal flow rate	11500 l/min
Operating medium	Compressed air as per ISO 8573-1:2010 [7:4:4] Inert gas
Information on operating and pilot media	Operation with oil lubrication possible (required for further use)
Air quality class at the output	Compressed air as per ISO 8573-1:2010 [7:4:4] Inert gas
Temperature of medium	-10 °C ... 60 °C
Ambient temperature	-10 °C ... 60 °C
Product weight	1200 g
Type of mounting	Front panel mounting Line installation With accessories
Pneumatic connection 1	G1
Pneumatic connection 2	G1
Note on materials	RoHS-compliant
Material of sub-base	Die-cast zinc
Seals material	NBR
Housing material	Die-cast zinc